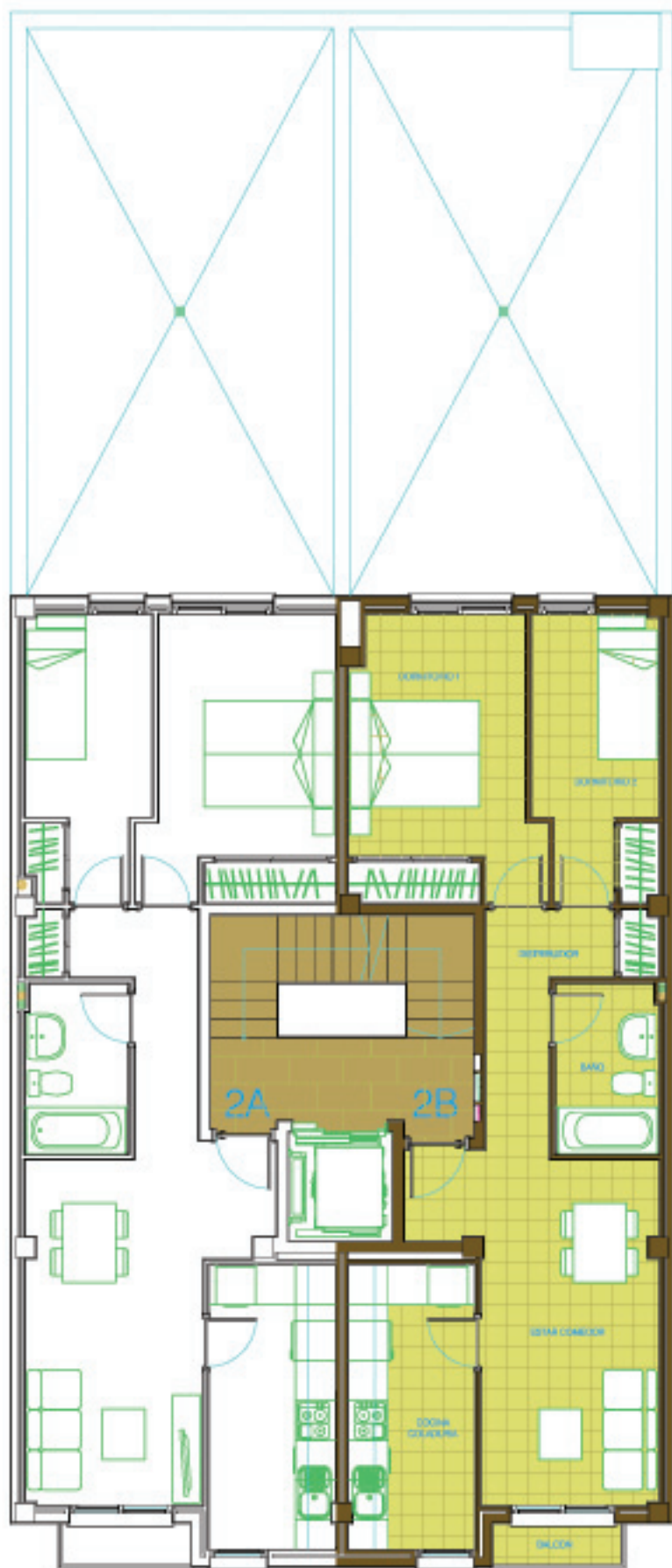


# EDIFICIO CALLE REINA MARIA CRISTINA,57. PALMA DE MALLORCA.



## VIVIENDA 2ºB

### SUPERFICIES UTILES

|                  |                     |
|------------------|---------------------|
| ESTAR COMEDOR    | 15.40m <sup>2</sup> |
| COCINA COLADURIA | 8.00m <sup>2</sup>  |
| DORMITORIO 1     | 12.00m <sup>2</sup> |
| DORMITORIO 2     | 7.90m <sup>2</sup>  |
| BAÑO             | 3.80m <sup>2</sup>  |
| DISTRIBUIDOR     | 5.10m <sup>2</sup>  |
| BALCON           | 1.35m <sup>2</sup>  |

### SUPERFICIES CONSTRUIDAS

|         |                     |
|---------|---------------------|
| CERRADA | 62.40m <sup>2</sup> |
| ABIERTA | 1.35m <sup>2</sup>  |

